



BIM-M

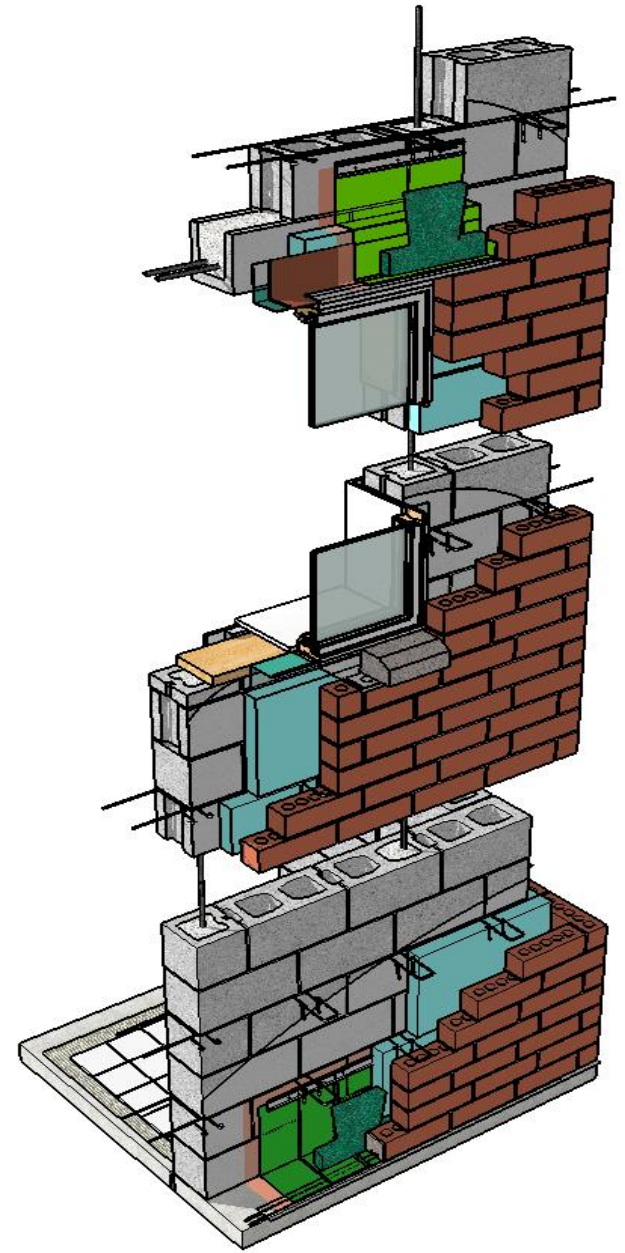
**Building Information Modeling
for Masonry**

Phase II - Masonry Wall Definition (MWD) Project Outline

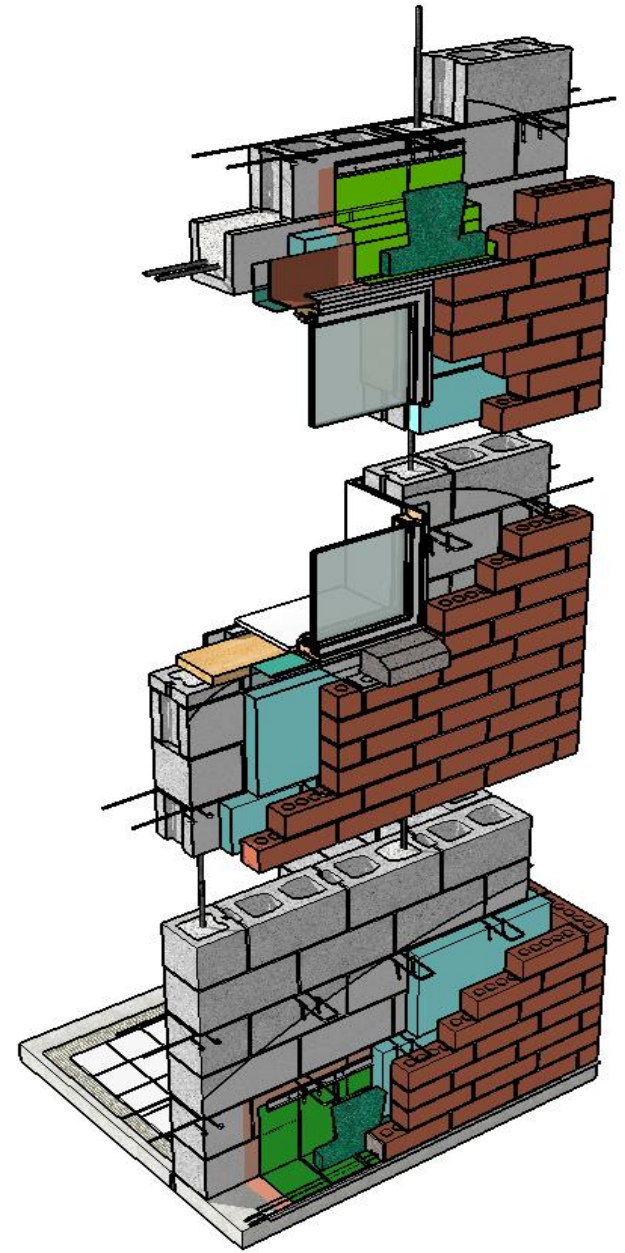
MWD Team

- Russell Gentry
- Charles Eastman
- Andres Cavieres
- Jeff Collins
- Jamie Davis

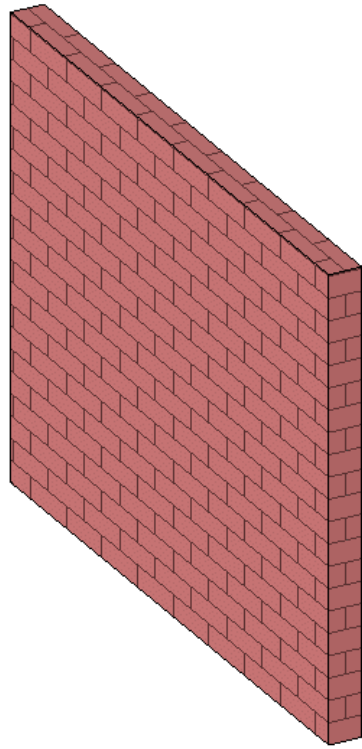
What
goes into
the
model?



How and
when
does it go
there?

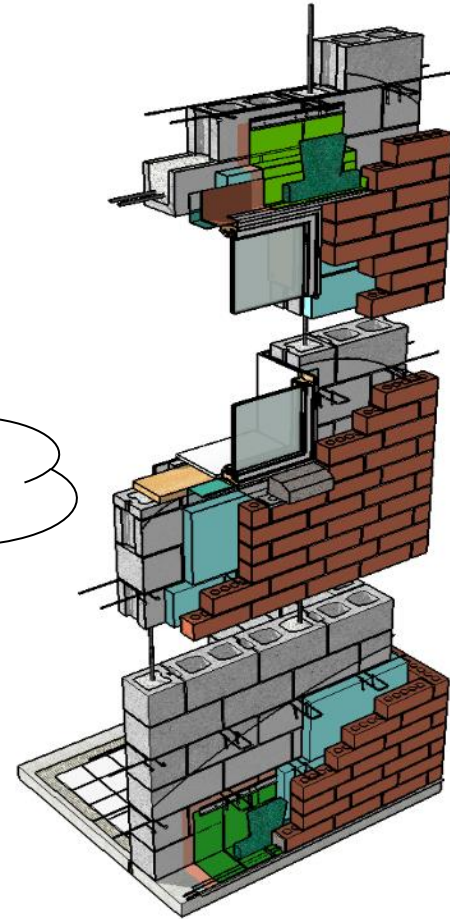


BIM-M | Limitations



LOD 100

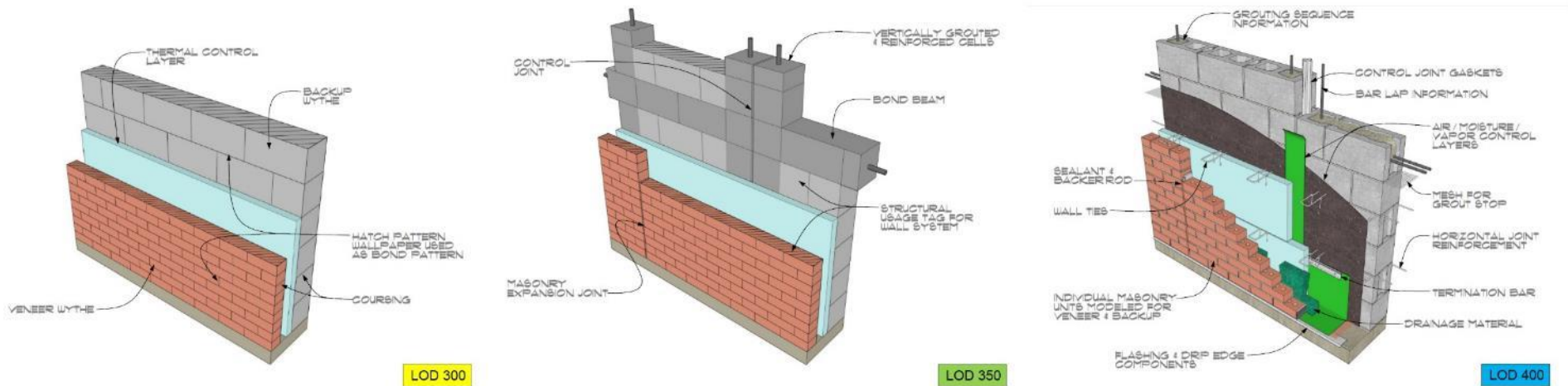
MISSING REPRESENTATIONS



LOD 500

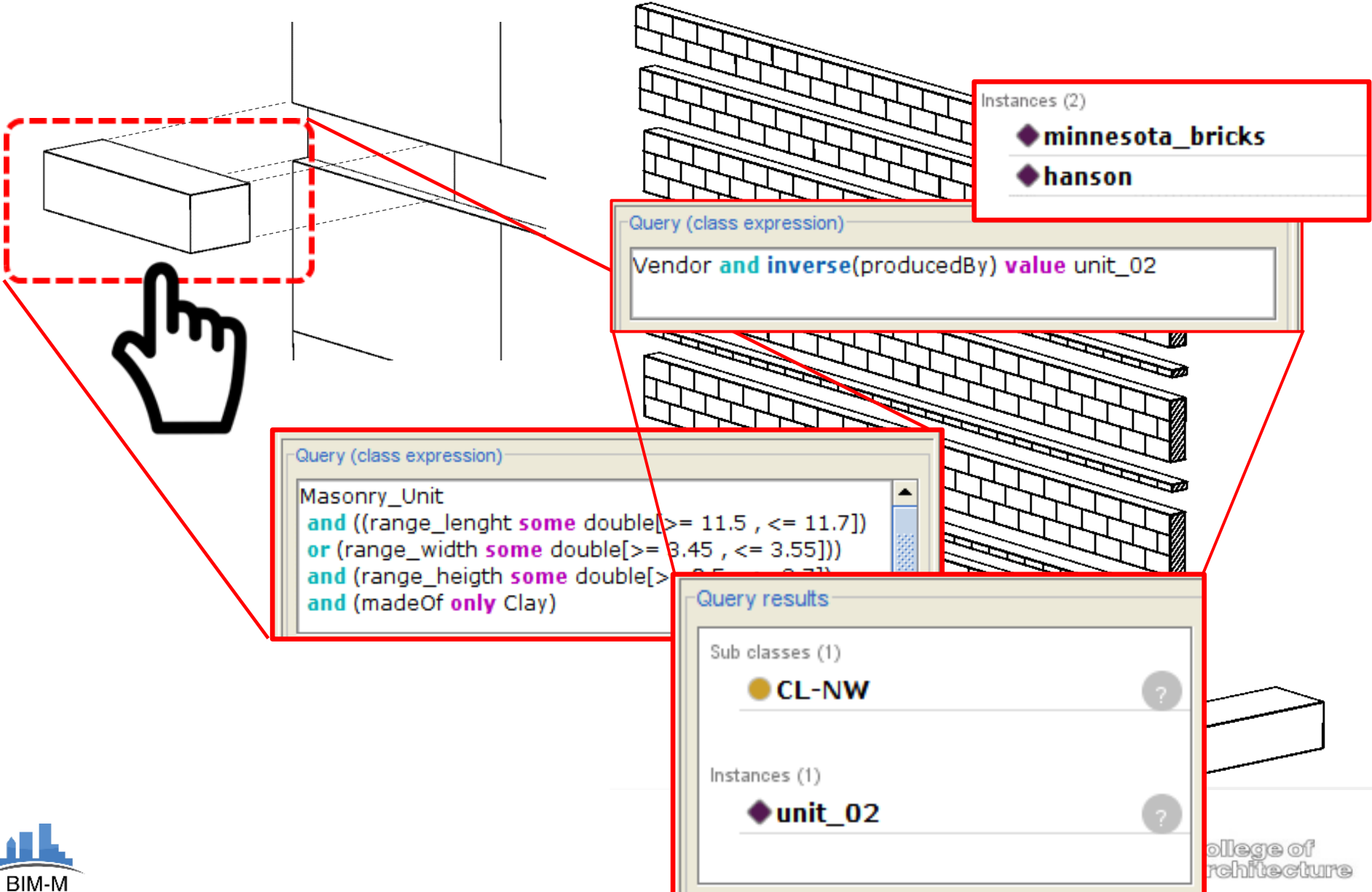


BIM-M | Incremental LOD (bidirectional)



Project Evolution

BIM-M | Stack Walls



BIM-M | Summary

- What are the minimum construction standards set as default in LOD?
- Who sets those standards? Can users override them?
- Rule checkers and red flags (spell checking for masonry)
- What LOD architects and engineers should provide? U to 350?
- Explicit modeling of units and parts? Where, when?
- Contractual issues: who owns the models?